

# Installation Instructions

VAG 2.0 TSI Engines – 3 Channel

**Bluespark**  
AUTOMOTIVE



This product has been designed and manufactured to work correctly with installation as described in these instructions.

Failure to follow these instructions could result in damage to property, damage to the product and or potential injury.

It is very important that you read and understand these instructions thoroughly before installing this product.

## Included Contents:

- Tuning Module
- Wiring Loom
- Fastening Ties
- Installation and User instructions
- Protective Bag For Module – (prevents damage to unit casing)



## Before installation:

1. Open the vehicle's bonnet
2. Remove the ignition key
3. Close and lock the doors
4. Wait 5 minutes before removing any electrical plugs



Do not open the vehicle doors or unlock the vehicle while installation is in progress.

## Installation Location:

The module should be installed between the vehicle's MAP and Boost sensors as shown in the diagram.

## Locating the Unit:

The unit itself should be mounted away from:



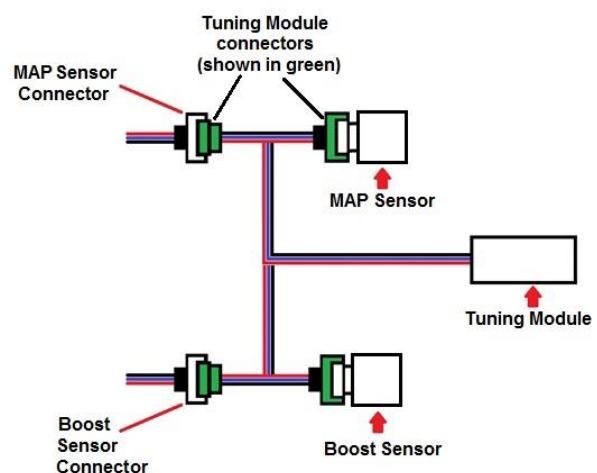
Sources of Extreme Heat



Sources of Vibration



Sources of Spray Water



GR-H4#-FEP4-H3-3ch-821

# Installation Instructions

VAG 2.0 TSI Engines – 3 Channel

**Bluespark**  
AUTOMOTIVE

## Step 1



- Remove the plastic engine cover, it is normally removed with a firm tug and your engine should look similar to the photo in step 2.
- Familiarise yourself with the MAP sensor indicated in step 2.
- The boost sensor is located on the underside of the engine

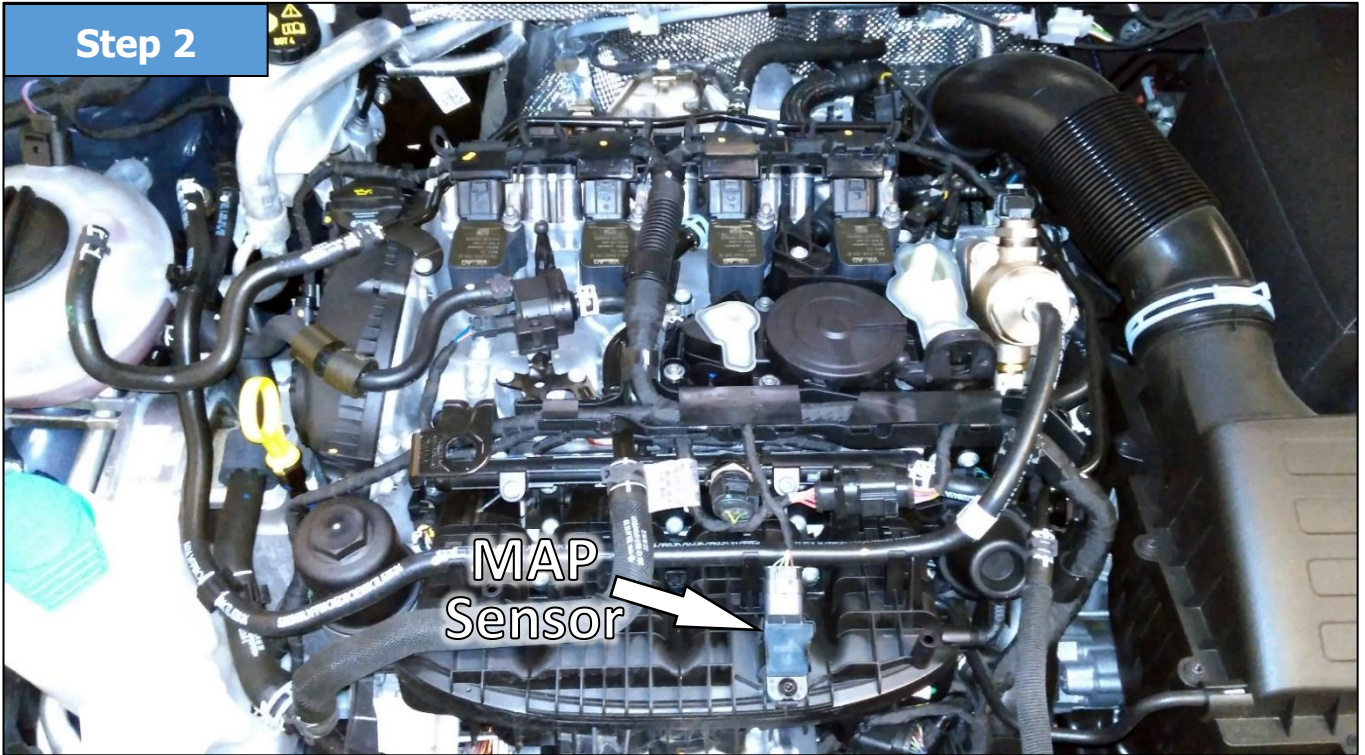


# Installation Instructions

VAG 2.0 TSI Engines – 3 Channel

**Bluespark**  
AUTOMOTIVE

## Step 2



- Unplug the MAP Sensor connector (4 pin) by first pulling back the locking tab and then pressing down the releasing clip and pulling back the connector.
- Insert the connector from the Tuning Module's wiring loom into the MAP Sensor.
- Insert the Vehicle's MAP Sensor connector into the corresponding connector on the Tuning Module's wiring loom.

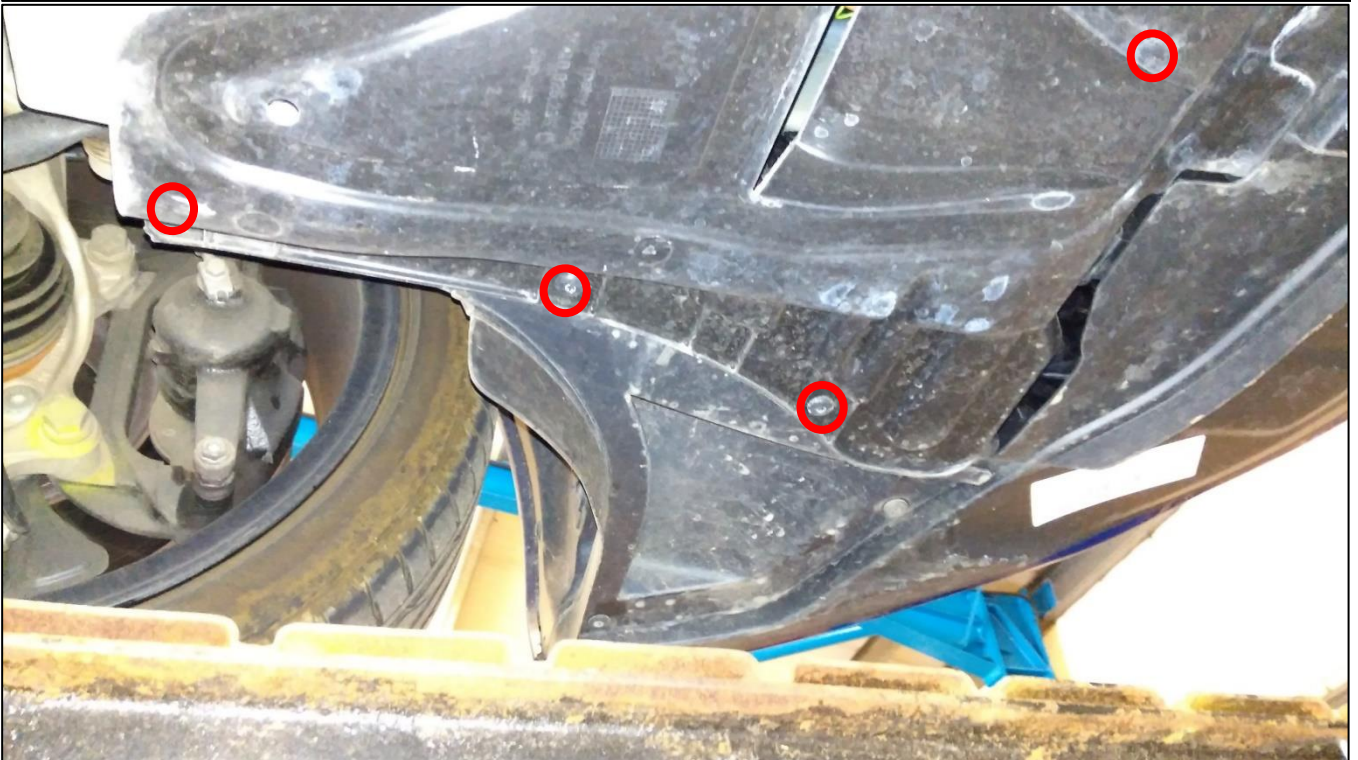
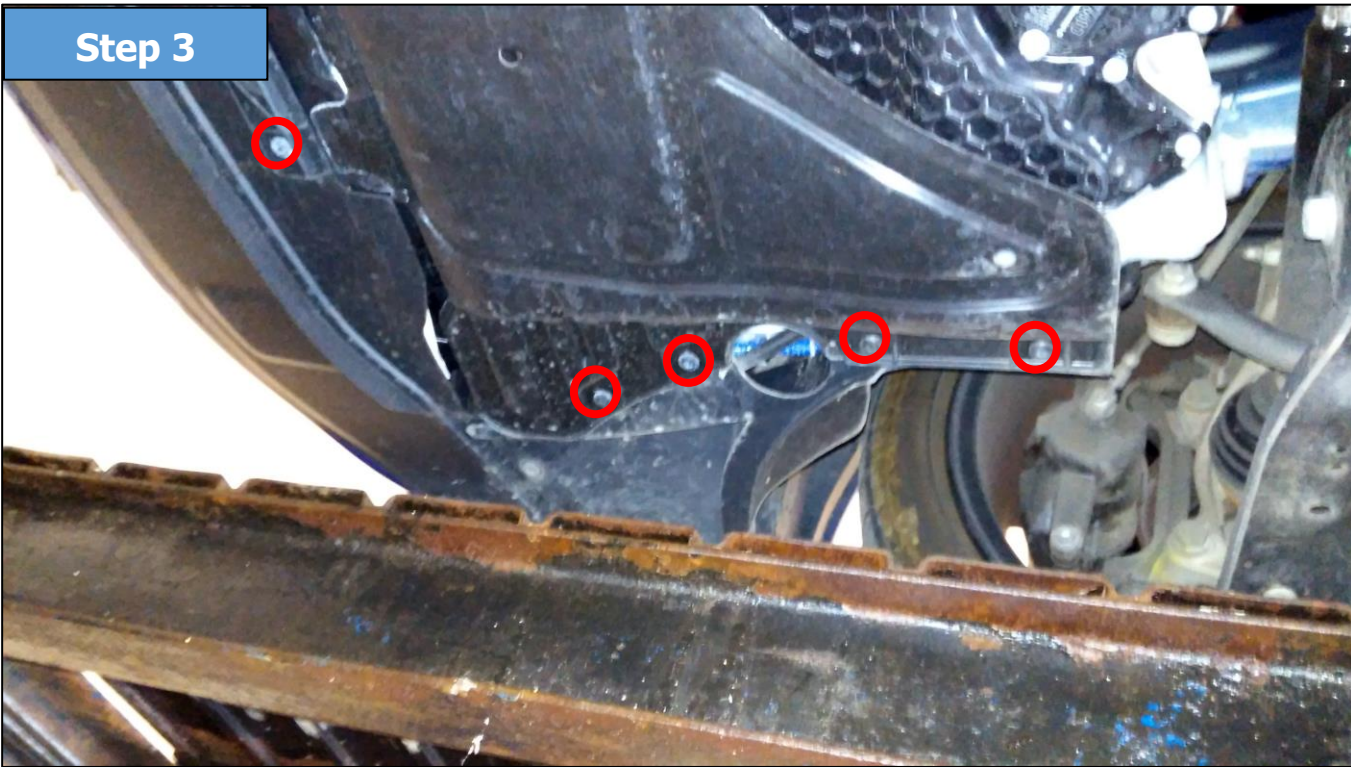


# Installation Instructions

VAG 2.0 TSI Engines – 3 Channel

**Bluespark**  
AUTOMOTIVE

## Step 3



- Lift the vehicle, remove the undertray by removing the Torx headed bolts.
- With the undertray removed you should be able to see the boost sensor on the boost pipe as pictured.

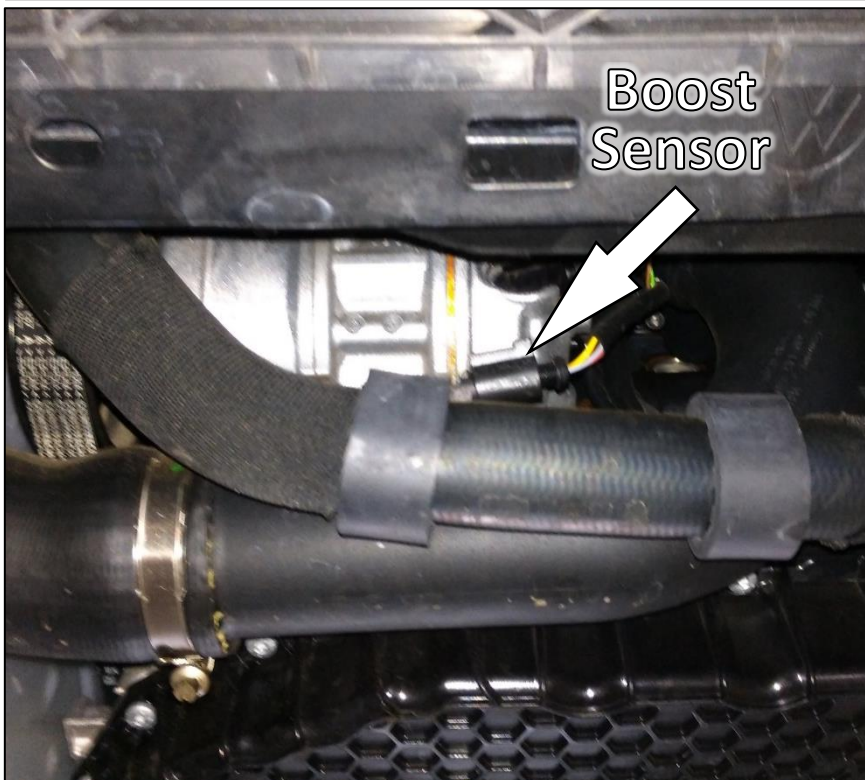
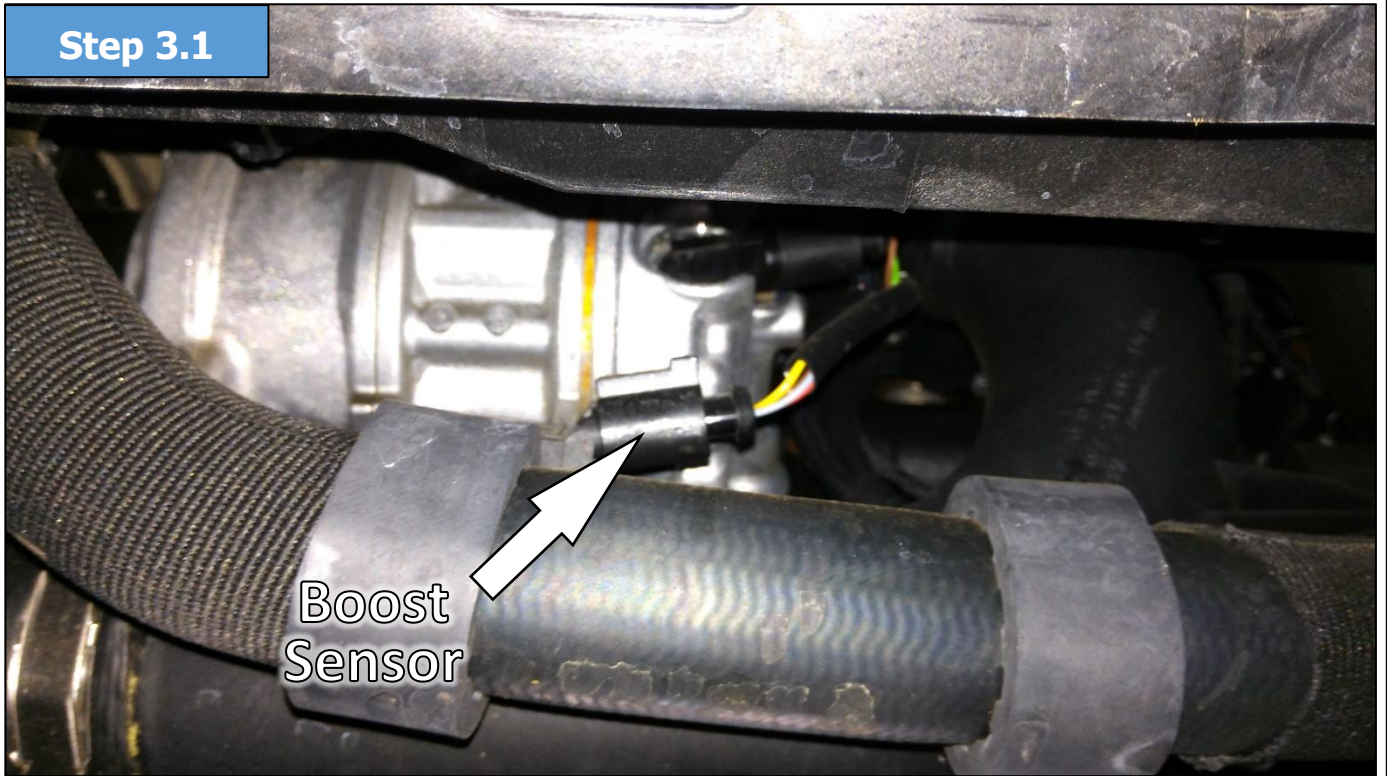


# Installation Instructions

VAG 2.0 TSI Engines – 3 Channel

**Bluespark**  
AUTOMOTIVE

## Step 3.1



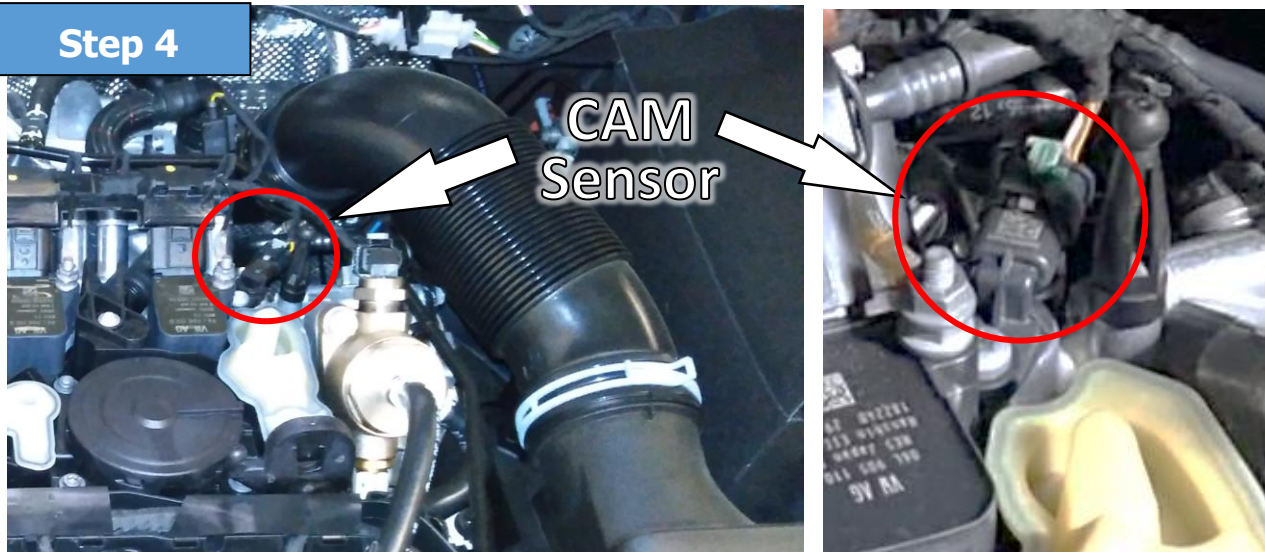
- Unplug the Boost Sensor connector (4 pin) by first then pressing down the releasing clip and pulling back on the connector.
- Insert the connector from the Tuning Module's wiring loom into the Boost Sensor.
- Insert the Vehicle's Boost Sensor connector into the corresponding connector on the Tuning Module's wiring loom.
- Secure the Boost wiring loom using included cable ties.

# Installation Instructions

VAG 2.0 TSI Engines – 3 Channel

**Bluespark**  
AUTOMOTIVE

## Step 4



- Unplug the CAM Sensor connector (3 pin) by first pulling back the locking tab and then pressing down the releasing clip and pulling back the connector.
- Insert the connector from the Tuning Module's wiring loom into the CAM Sensor.
- Insert the Vehicle's CAM Sensor connector into the corresponding connector on the Tuning Module's wiring loom.
- Secure the CAM wiring loom using included cable ties.
  
- With the unit successfully installed please secure the unit and wiring loom within the engine bay, paying attention to the guidelines highlighted on Page 1.



**Route the tuning box wiring harness away from sources of heat (exhaust manifolds, EGR pipes, most stainless steel pipes) and also away from any rotating parts such as belts.**

- Double check all connections are correct and firmly connected. If this is the case, start the vehicle and ensure there are no engine warning lights or error messages displayed.
- Re-install the undertray and place the engine cover back over the engine making sure it clips in to place.

If everything is as it should be, please feel free to take the vehicle out for a test drive and enjoy the added responsiveness and power added to your vehicle by the Tuning Module.