

# Installation Instructions

VAG 1.5TSi SENT

**Bluespark**  
AUTOMOTIVE



This product has been designed and manufactured to work correctly with installation as described in these instructions.

Failure to follow these instructions could result in damage to property, damage to the product and or potential injury.

It is very important that you read and understand these instructions thoroughly before installing this product.

WE RECOMMEND YOU ALLOCATE AT LEAST 2 HOURS FOR 1<sup>ST</sup> TIME INSTALLATION AND SETUP

## Included Contents:

- Tuning Module
- Wiring Loom
- Fastening Ties
- Installation and User instructions
- Protective Bag For Module – (prevents damage to unit casing)



## Before installation:

1. Open the vehicle's bonnet
2. Remove the ignition key
3. Close and lock the doors
4. Wait 5 minutes before removing any electrical plugs



Do not open the vehicle doors or unlock the vehicle while installation is in progress.

## Installation Location:

The module should be installed between the vehicle's MAP and Boost sensors as shown in the diagram.

## Locating the Unit:

The unit itself should be mounted away from:



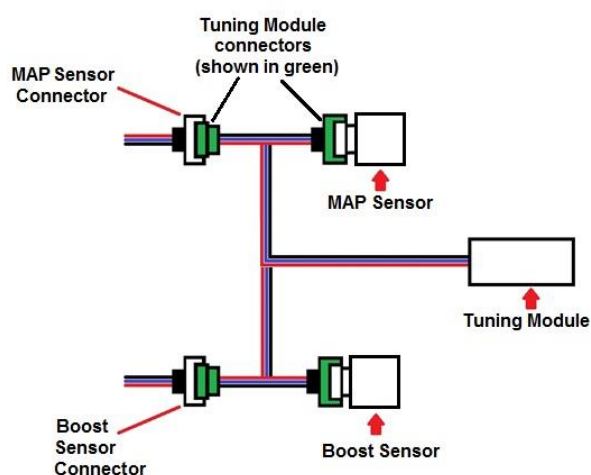
Sources of Extreme Heat



Sources of Vibration



Sources of Spray Water



H3-H3-SENT-783

# Installation Instructions

VAG 1.5TSi SENT

**Bluespark**  
AUTOMOTIVE

## Introduction



- Ensure that your engine looks similar to the supplied photographs. (minor changes with ancillary components are to be expected, however if the engine looks nothing alike, please contact Bluespark Support. )
- Familiarise yourself with the locations of the connectors highlighted.
- Make sure that you have a good grasp of the operation of the connector clips and or locking tabs. - If the connectors you are trying to access are in an awkward place, it may be useful to try unplugging (and then re-inserting) a connector on the vehicle which is more easily accessible. Alternatively try plugging together the connectors on the Tuning Module itself.

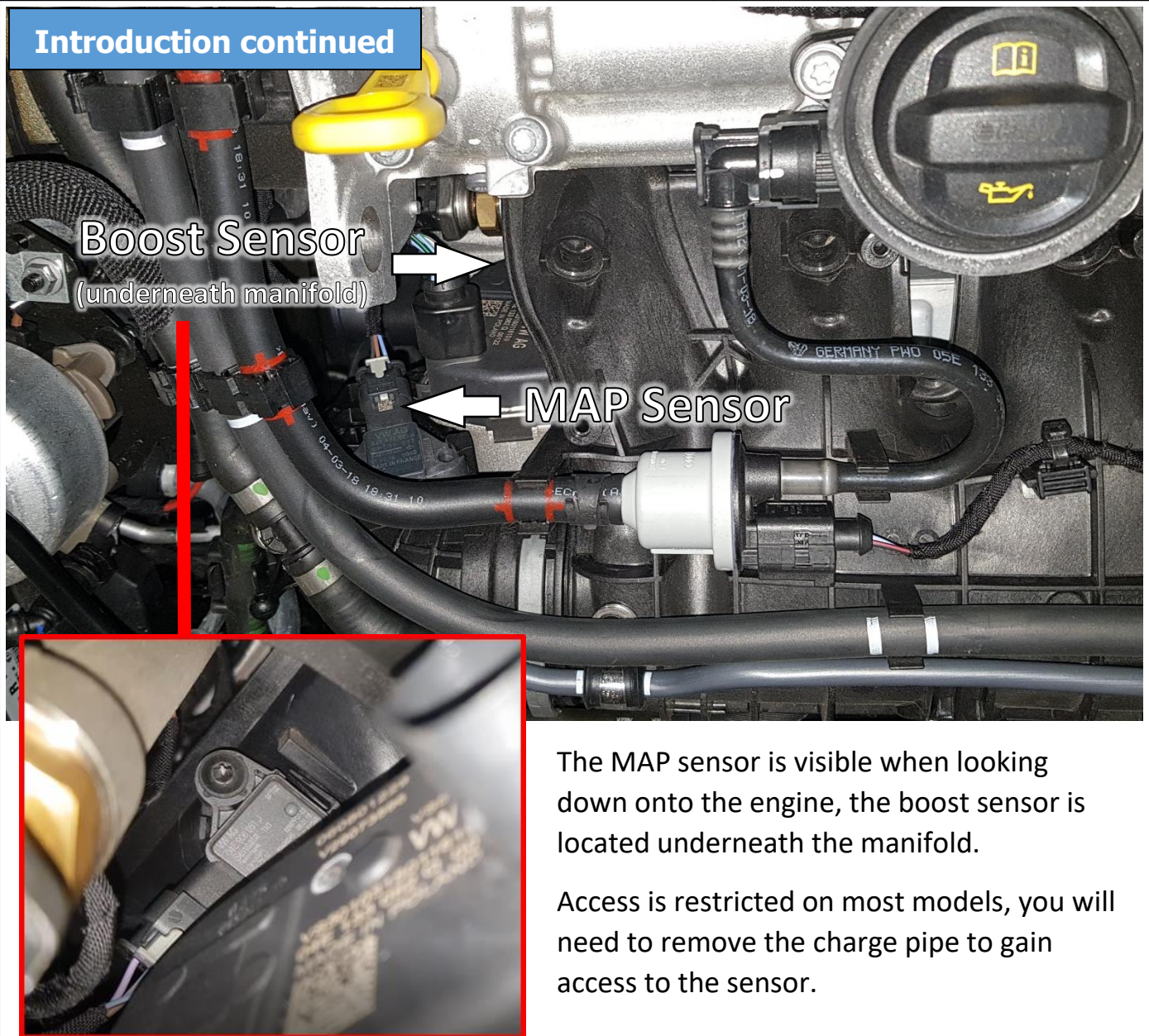


# Installation Instructions

VAG 1.5TSi SENT

**Bluespark**  
AUTOMOTIVE

## Introduction continued



The MAP sensor is visible when looking down onto the engine, the boost sensor is located underneath the manifold.

Access is restricted on most models, you will need to remove the charge pipe to gain access to the sensor.



# Installation Instructions

VAG 1.5TSi SENT

**Bluespark**  
AUTOMOTIVE

## Step 1

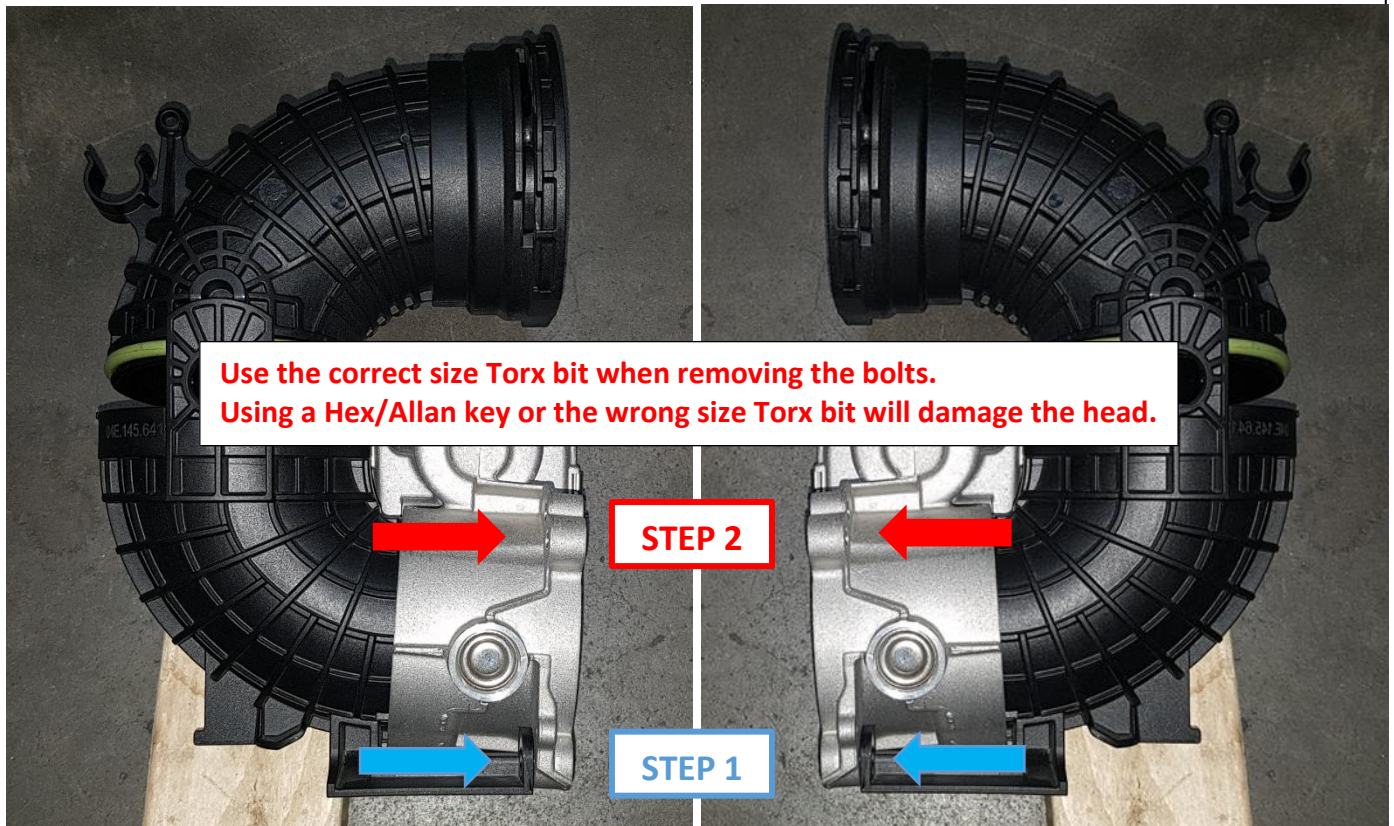


On most models, to access the boost sensor you will need to remove the charge pipe.

**Please note:** You do not need to separate the two parts of the charge pipe.



- Release the locking clip on the top part of the pipe.
- Undo the **two bolts** at the bottom of the pipe to release the charge pipe.
- The **two remaining bolts** will be removed in step 2.





# Installation Instructions

VAG 1.5TSi SENT

**Bluespark**  
AUTOMOTIVE

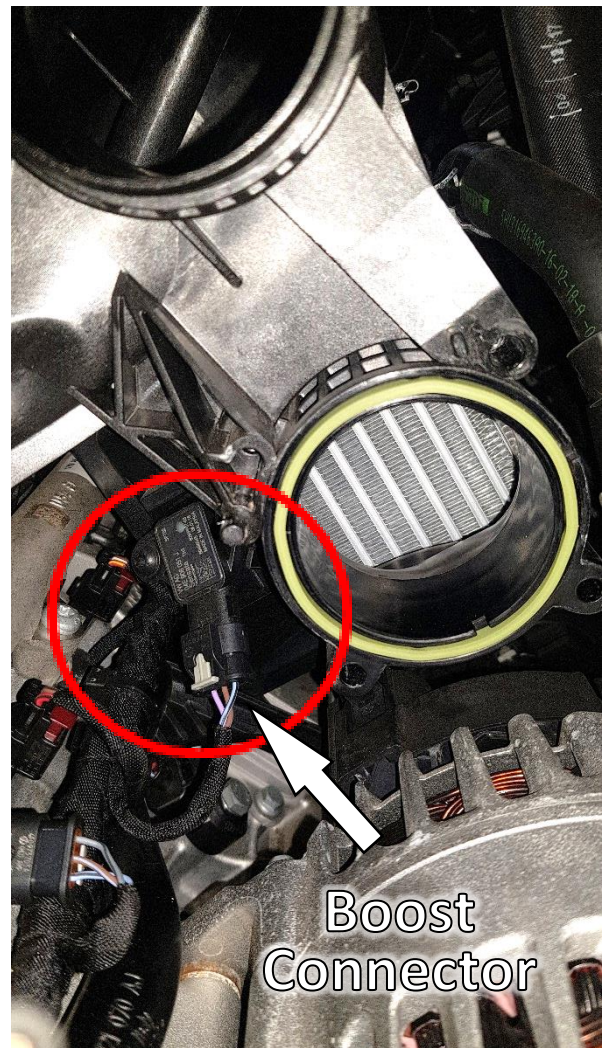
## Step 2



- Unplug the throttle body connector by first pushing the connector forwards, pulling back the locking clip and pulling back on the connector.

*We are not connecting to this but unplugging it will allow the removal of the throttle body.*

- Remove the throttle body by removing the last two holding bolts.
- You should now be left with access to the boost sensor.



# Installation Instructions

VAG 1.5TSi SENT

**Bluespark**  
AUTOMOTIVE

## Step 2



- Unplug the Boost Sensor connector (3 pin) by sliding back the grey locking tab, press down the releasing tab and pull back on the connector.
- Insert the connector from the Tuning Module's wiring loom into the Boost Sensor.
- If you have an extension harness, connect the extension to the boost sensor and to the connector labelled **boost** on the tuning box wiring loom.
- Insert the Vehicle's Boost Sensor connector into the corresponding connector on the Tuning Module's wiring loom.

## Step 3

- Ensure your boost connections are fully inserted, secure and all locking tabs are fully repositioned correctly. Due to the position of the boost sensor you will not easily be able to check this after the installation is complete.
- Reversing steps 2 then 1, reconnect the throttle body and the charge pipe.

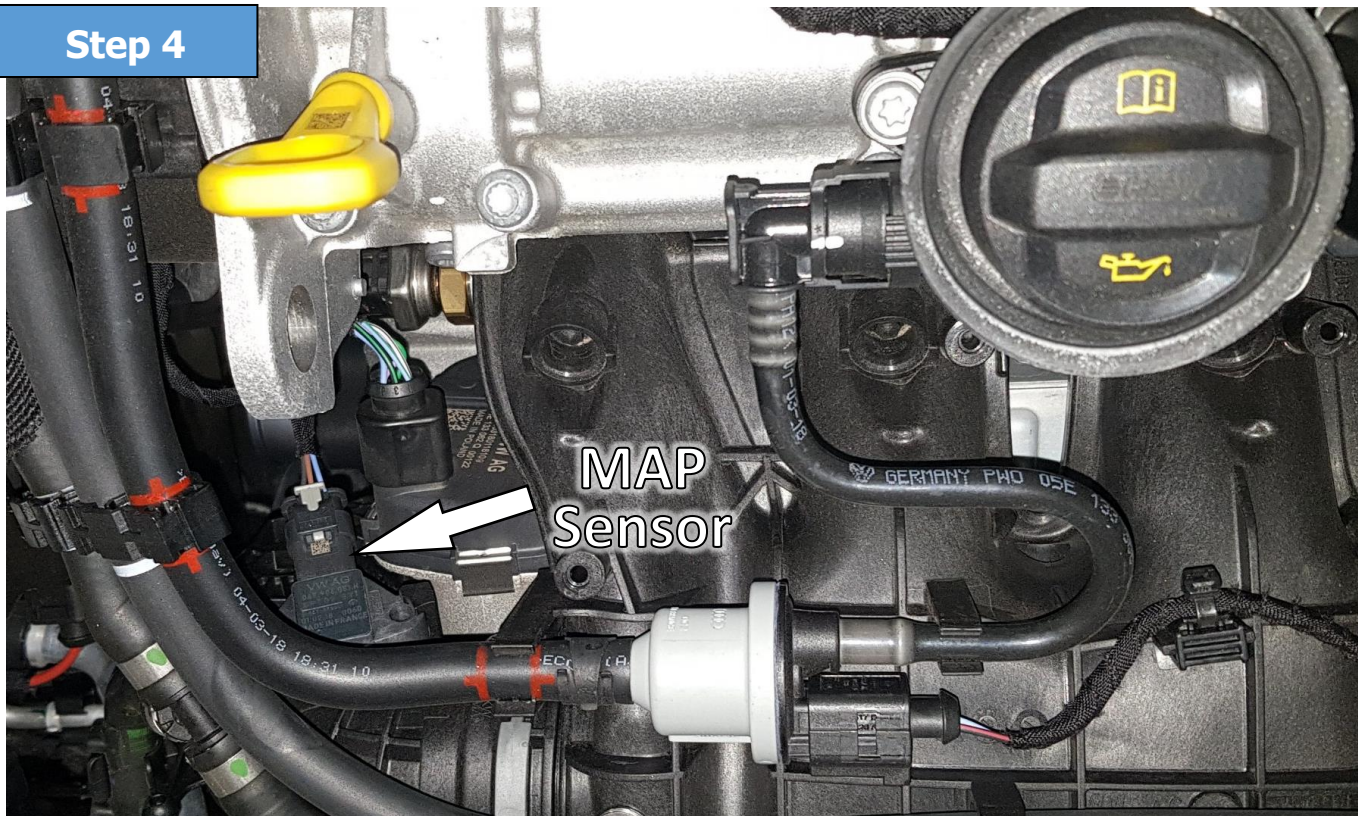


# Installation Instructions

VAG 1.5TSi SENT

**Bluespark**  
AUTOMOTIVE

## Step 4



- Unplug the MAP Sensor connector (3 pin) by sliding back the grey locking tab, press down the releasing tab and pull back on the connector.
- Insert the connector from the Tuning Module's wiring loom into the MAP Sensor.
- Insert the Vehicle's MAP Sensor connector into the corresponding connector on the Tuning Module's wiring loom.
- Ensure all connectors are fully inserted and the grey locking tabs are pushed back into place.

# Installation Instructions

VAG 1.5TSi SENT

**Bluespark**  
AUTOMOTIVE

- With the unit successfully installed please secure the unit and wiring loom within the engine bay, paying attention to the guidelines highlighted on Page 1.



Route the tuning box wiring harness away from sources of heat (exhaust manifolds, EGR pipes, most stainless steel pipes) and also away from any rotating parts such as belts.

- Double check all connections are correct and firmly connected. If this is the case, start the vehicle and ensure there are no engine warning lights or error messages displayed.

If everything is as it should be, please feel free to take the vehicle out for a test drive and enjoy the added responsiveness and power added to your vehicle by the Tuning Module.